



2014

OKUMA GENOS L300-MYW CNC TURNING CENTER



2014

OKUMA SPACETURN LB3000EX-II CNC TURNING CENTER

NICHOLS  **PRECISION**

– FULL FACILITY CLOSURE

INCLUDING: AS LATE AS 2014 – TSUGAMI B0-325-II & SS-26 SWISS-TYPE TURNING, OKUMA SPACETURN LB3000EX-II, GENOS L300-MYW, HARDINGE & DAEWOO LIVE TOOL TURNING CENTERS, DOOSAN, FADAL & MATSUURA VMC'S, TOOLROOM, AIR COMPRESSORS, MITUTOYO CMM, INSPECTION, FORKLIFT, BAR STOCK & MATERIAL, TOOLING & FACTORY SUPPORT



2014

TSUGAMI B0325-II SWISS-TYPE CNC TURNING CENTER

Sale Closing From: Tuesday, May 21st at 10:00 AM MST

Sale Location: 1257 W Geneva Drive, Tempe, Arizona 85282

Inspection: Monday, May 20th from 8:00 AM – 4:00 PM MST

SWISS-TYPE CNC TURNING CENTERS & BAR FEEDS, CNC TURNING CENTERS



2014

TSUGAMI B0325-II SWISS-TYPE CNC TURNING CENTER

SWISS-TYPE CNC TURNING CENTERS & BAR FEEDS

2014 TSUGAMI B0325-II SWISS-TYPE CNC TURNING CENTER, s/n 22176B, Fanuc Oi-TD CNC Control, 1.26" Max. Bar Size, 5-Axis, 8,000 RPM Main Spindle, 27-Tool Positions, Tri-Mist 850 G2, LNS Turbo MH500 Chip Conveyor

2013 TSUGAMI SS26 SWISS-TYPE CNC TURNING CENTER, s/n 365, Fanuc Series 32i-Model B CNC Control, 6-Axis, 1.02" Max. Bar Size, 10.62" Max. Headstock Stroke, 24-Tool Positions, 200-10,000 RPM

2014 LNS ALPHA 538 BAR FEED, s/n 15055200182
LNS EXPRESS 332 S2 BAR FEED, s/n 18332200011



2013

TSUGAMI SS26 SWISS-TYPE CNC TURNING CENTER



2014

OKUMA GENOS L300-MYW CNC TURNING CENTER



2013

OKUMA SPACETURN LB3000EX-II CNC TURNING CENTER



2014

LNS ALPHA 538 BAR FEED



LNS EXPRESS 332 S2 BAR FEED



2002

DAEWOO PUMA 2000Y CNC TURNING CENTER



2013

OKUMA L250E CNC TURNING CENTER



2012

DOOSAN LYNX 220LM CNC TURNING CENTER

To discuss your requirements for an auction, please call Perfection Industrial +1-847-545-6374

CNC TURNING CENTERS, EDM



**HARDINGE
QUEST
CHNC42
CNC
TURNING
CENTER**



**ROMI
CENTUR 30G
CNC
TURNING
CENTER**

2004



2 AVAILABLE

DAEWOO LYNX200 CNC TURNING CENTER



2 AVAILABLE

YANG SML-12 CNC TURNING CENTER



2014

ATS ML-580 BAR FEED

CNC TURNING CENTERS

2014 OKUMA GENOS L300-MYW CNC TURNING CENTER, s/n MYW010, Okuma OSP-P300L-R CNC Control, Collet Chuck, 12-Position Turret, Tailstock, 20.47" Swing Over Bed, 6.69" Swing Over Saddle, 11.81" Max. Turning Dia., 9"-X, 17.72"-Z, 2"-Y, 20.47"-W

2013 OKUMA SPACETURN LB3000EX-II CNC TURNING CENTER, s/n 170062, Okuma OSP-P300L CNC Control, Collet Chuck, 12-Position Turret, Tailstock, Chip Blaster High Pressure Coolant System, 22.83" Swing Over Bed, 18.5" Swing Over Saddle, 20.47" Between Centers, 16.14" Max. Turning Dia., 19.69" Max. Working Length, 10.24"-X, 22.24"-Z, 5,000 RPM Max. Spindle RPM

2013 OKUMA L250E CNC TURNING CENTER, s/n C3841, Okuma OSP-P300L-R CNC Control, Kitagawa B-208 8" 3-Jaw Chuck, 12-Position Turret, Tailstock, 7.88" Turning Dia., 17.78" Swing, 19.69" Machining Length

2012 DOOSAN LYNX 220LM CNC TURNING CENTER, s/n ML-0027-00139, Collet Chuck, 24-Position Turret, Tailstock, 20.1" Swing Over Bed, 11.4" Swing Over Saddle, 6.7" Max. Turning Dia., 20.1" Max. Turning Length

2002 DAEWOO PUMA 2000Y CNC TURNING CENTER, s/n P2000Y0093, Fanuc Series 18i-T CNC Control, Kitagawa BB03 8" 3-Jaw Chuck, 12-Position Turret, Tailstock, CE Marked

2003 DAEWOO PUMA 240LB CNC TURNING CENTER, s/n PM240145 (Sold as Parts Machine)

(2) 2001 DAEWOO LYNX200 CNC TURNING CENTERS, s/n's L20022140, L2002141, Fanuc 21i-T CNC Control, Collet Chuck, 12-Position Turret, 18.1" Swing, 1.77" Bar Capacity, 11" Max. Turning Dia., 11.8" Max. Turning Length

HARDINGE QUEST CHNC42 CNC TURNING CENTER, s/n GC-128-P, Fanuc 21i-TB CNC Control, Collet Chuck, 8-Position Turret

2004 ROMI CENTUR 30G CNC TURNING CENTER, s/n 002-089649-411, GE Fanuc Oi CNC Control, Collet Chuck, 14.17"-X, 19.68"-Z, 1.625" Max. Machining Dia. (Bar), 4.72" Max. Machining Length



SMW SPACE SAVER 2004 BAR FEED



SMW SPACE SAVER 2003 BAR FEED

YANG SML-12 CNC TURNING CENTER, s/n C00032, Mitsubishi CNC Control, Collet Chuck, 13" Swing Over Bed, 5.4" Swing Over Slide, 5.3" Max. Dia., 5.9" Max. Length, 9.1"-X, 9.1"-Z, 6,000 RPM

YANG SML-12 CNC TURNING CENTER, s/n 00248, Fanuc O-TD CNC Control, Collet Chuck, 13" Swing Over Bed, 5.4" Swing Over Slide, 5.3" Max. Dia., 5.9" Max. Length, 9.1"-X, 9.1"-Z, 6,000 RPM

2014 ATS ML-580 BAR FEED, s/n 22/2785

SMW SPACE SAVER 2003 BAR FEED, s/n 11-366-11-00

LNS ECO LOAD-L BAR FEED, s/n 1405800303, CE Marked

SMW SPACE SAVER 2004 BAR FEED, s/n 011-35310/00

(2) CNC ENHANCEMENTS HYDROTURNT HT 1.6 BAR FEEDS, s/n's H1106, H1044

CNC ENHANCEMENTS HYDROTURNT BAR FEED, s/n 0981, Approx. 16'L

EDM

BELMONT MAXICUT ZNC S-26 SMALL HOLE EDM, s/n 99GBZ26034, CNC Control 13.8"-X, 9.8"-Y x 13.8"-Z, 17.7" x 11.8" x 11.8" Max. Workpiece Size, 330 Lb Workpiece Capacity, CE Marked



**BELMONT MAXICUT ZNC S-26
SMALL HOLE EDM**

View our current auction schedule at www.perfectionindustrial.com

CNC VERTICAL MACHINING CENTERS, TOOL ROOM MACHINERY



2006

DOOSAN DMV3016L VERTICAL MACHINING CENTER



FADAL VMC5020A CNC VERTICAL MACHINING CENTER



MATSUURA MC-510VS CNC VERTICAL MACHINING CENTER

Sale Closing From: Tuesday, May 21st at 10:00 AM MST

CNC VERTICAL MACHINING CENTERS

2006 DOOSAN DMV3016L VERTICAL MACHINING CENTER, s/n NM4100554, Fanuc Series Oi-MC CNC Control, 17" x 36" Table, CAT 40 Spindle Taper, 30 ATC, 30"-X, 16"-Y, 20"-Z

FADAL VMC5020A CNC VERTICAL MACHINING CENTER, s/n 9710428, Fadal CNC88HS CNC Control, 20" x 52" Table, CAT 40 Spindle Taper, 30 ATC, 50"-X, 20"-Y, 20"-Z, 7,500 RPM, 4,120 Lb Table Capacity

MATSUURA MC-510VS CNC VERTICAL MACHINING CENTER, s/n 900208125, Yasnac CNC Control, 15" x 30" Table, BT35 Spindle Taper, 20 ATC, 20"-X, 14"-Y, 18"-Z, 7,500 RPM

(2) MATSUURA MC-510V CNC VERTICAL MACHINING CENTERS, s/n's 880906885, 890807641, Yasnac CNC Control, 15" x 30" Table, BT35 Taper, 20 ATC, 20"-X, 14"-Y, 18"-Z, 6,000 RPM

MATSUURA MC-510VF CNC VERTICAL MACHINING CENTER, s/n 920709886, Yasnac CNC Control, 15" x 30" Table, BT35 Taper, 20 ATC, 20"-X, 14"-Y, 18"-Z, 8,000 RPM



2 AVAILABLE

MATSUURA MC-510V CNC VERTICAL MACHINING CENTER



MATSUURA MC-510VF CNC VERTICAL MACHINING CENTER



DOALL C-916A HORIZONTAL BANDSAW



LNS PB-80 CHAMFER MACHINE



JET 1440-PGH GEARED HEAD GAP BED LATHE



CHEVALIER FCG-714M UNIVERSAL TOOL GRINDER



DOALL 2013-V VERTICAL BANDSAW



BRIDGEPORT VERTICAL MILL

TOOL ROOM MACHINERY

DOALL 2013-V VERTICAL BANDSAW, s/n 500-971531, Variable Speed, Tilting Table, 10" Throat

DOALL C-916A HORIZONTAL BANDSAW, s/n 528-97255, 2 HP, Power Stock Clamp, In-Feed and Out-Feed Conveyor

2002 LNS PB-80 CHAMFER MACHINE, s/n 01120-02, 10" 3-Jaw Chuck, 3" Capacity, In-Feed Table

JET 1440-PGH GEARED HEAD GAP BED LATHE, s/n 963GB032, 14" Swing Over Bed, 7-1/8" Swing Over Cross Slide, 23-5/8" Swing Over Gap, 40" Between Centers, Tool Post, Tailstock

BRIDGEPORT VERTICAL MILL, s/n 254004, 9" x 42" Power Feed Table, Rapid 8 Power Draw Bar, Sokki DE002 2-Axis DRO

CHEVALIER FCG-714M UNIVERSAL TOOL GRINDER, s/n I2889001, 5" x 27" Table, Indexing Collet Vise

HARDINGE DSC SECOND OPERATION LATHE, s/n NA, Collect Chuck, Tool Post

BOYER SHULTZ/CHALLENGER H612 SURFACE GRINDER, s/n 27739, 6" x 12" Electromagnetic Chuck

ENCO 163-4900 COMBINATION BELT AND DISC SANDER, s/n 25888

JET SBR-80N COMBINATION BRAKE AND ROLL, s/n 803308, 20" Ga. x 30" Capacity

MAXFLO PC-1000-DD DOWN DRAFT TABLE, s/n 1425, 36" x 26" Work Table, 1.5 HP

UNITED AIR SPECIALISTS PORTA-CLEAN 1 HO SMOG HOG, s/n 60026681-0797, 1 HP

ALSO AVAILABLE: DUAL END GRINDERS, ARBOR PRESS, BLAST CABINET, VIBRATORY BOWLS, ABRASIVES AND MORE

TOOLING, INSPECTION, FORKLIFT, AIR COMPRESSORS, SHIPPING CONTAINERS, OFFICE

TOOLING

HAAS HA5C 5C COLLET SERVO ROTARY HEAD, s/n 506157

OVER (150) CAT 40, BT40 AND BT35 TOOL HOLDERS, CARBIDE INSERTS, END MILLS, TAPS, DRILLS, BORING BARS, TURNING TOOLS, LIVE TOOL HOLDERS, CHUCKS, LARGE ASSORTMENT OF COLLETS, TOOL POSTS, TILTING T-SLOTTED TABLES AND MORE



KURT MACHINE VISES



TOOL HOLDERS

OVER 150+



MITUTOYO CRYSTA-PLUS M-574 CMM



STARRETT HB400 OPTICAL COMPARATOR



SURFACE PLATE AND MICROSCOPES



CATERPILLAR T-50 LP FORKLIFT

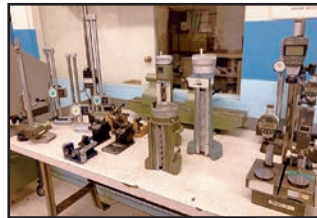
5,000 LB CAPACITY



VIEW OF PIN GAGES



HEIGHT GAGES AND HEIGHT MASTERS



VIEW OF ASSORTED INSPECTION GAGES



INSPECTION

MITUTOYO CRYSTA-PLUS M-574 CMM, s/n BG000180, 46" x 28.5" x 6" Granite Table, Renishaw MH20 Probe, w/IBM Computer and Mitutoyo MiCat Disc

STARRETT HB400 OPTICAL COMPARATOR, s/n 50820, Quadra-Chek 200 Control, Cabinet Base

MITUTOYO PH-350 OPTICAL COMPARATOR, s/n 3970, Mitutoyo UDR-220 DRO, Rolling Cabinet Base

AKASHI/MITUTOYO HR-521 ROCKWELL HARDNESS TESTER, s/n 160625, Table Top Type, Touch Face PLC Control

ALSO AVAILABLE: MICROSCOPE, HEIGHT GAGES, GRANITE SURFACE PLATES, BENCH CENTER, CONCENTRICITY GAGES, INDICATORS, OUTSIDE MICROMETERS, BLADE MICS, PITCH MICS, THREAD MICS, BORE GAGES, RADIUS GAGES, PLUG GAGE SETS, STANDARDS AND MORE

FORKLIFT

CATERPILLAR T-50 LP FORKLIFT, s/n 8EB03431, 5,000 Lb Capacity, 173" Lift Height, 40" Fork Length, Side Shift

AIR COMPRESSORS

ATLAS COPCO GA18P-A-125FM SCREW TYPE AIR COMPRESSOR, s/n WUX583406, 24 HP, 125 PSI

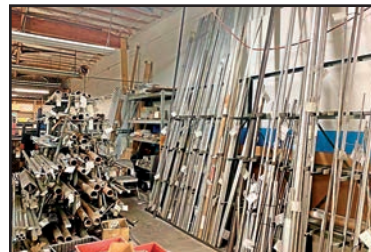
ATLAS COPCO GA118 SCREW TYPE AIR COMPRESSOR, s/n ARP723042, 25 HP, 127 Max. PSI

MANCHESTER TANK 120 GAL AIR RECEIVING TANK

ALSO AVAILABLE: SAFETY LADDER, FIBERGLASS LADDER, PALLET JACK, HAND TRUCKS, LIFTING STRAPS, BARREL DOLLIES, MOVING DOLLIES, SHOP FANS, CANTILEVER RACKING, ROLLING SHOP CARTS, FLAMMABLE LIQUIDS CABINET, PARTS WASHER, SHIPPING SCALES AND MUCH MORE



ATLAS COPCO GA18P-A-125FM SCREW TYPE AIR COMPRESSOR



VIEW OF ASSORTED STOCK



QINGDAO HYUNDAI HP-1CC-1331 20' STEEL SHIPPING CONTAINER



MINI 20' STEEL SHIPPING CONTAINER

MOBILE

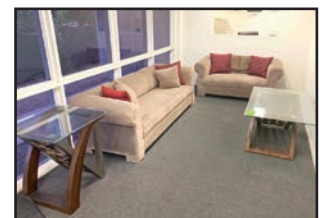
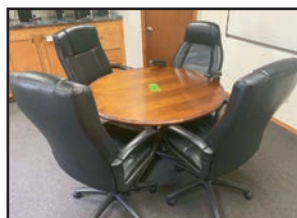
SHIPPING CONTAINERS

QINGDAO HYUNDAI HP-1CC-1331 20' STEEL SHIPPING CONTAINER, s/n QDKL98-760749, Double End Swing Out Doors

MOBILE MINI 20' STEEL SHIPPING CONTAINER, Double Swing Out Doors

OFFICE

COMPLETE OFFICE AREA INCLUDING OFFICE FURNITURE, RECEPTION AREA, COMPUTERS, MONITORS, LAPTOP, PRINTERS, VENDING MACHINE, REFRIGERATOR, MICROWAVES, AND MUCH MORE



COMPLETE OFFICE AREA



PERFECTION Industrial Sales

Perfection Industrial Sales – 2550 Arthur Ave., Elk Grove Village, IL 60007

Phone: +1-847-545-6374 – Fax: +1-847-427-8884

www.perfectionindustrial.com



Presorted
First Class Mail
U.S. Postage
PAID
Eugene, Oregon
Permit No. 17

Full Facility Closure Including: As Late As 2014 – Tsugami B0-325-II & SS-26 Swiss-Type Turning, Okuma Spaceturn LB3000EX-II, Genos L300-MYW, Hardinge & Daewoo Live Tool Turning Centers, Doosan, Fadal & Matsuura VMC's, Toolroom, Air Compressors, Mitutoyo CMM, Inspection, Forklift, Bar Stock & Material, Tooling & Factory Support

ONLINE ONLY AUCTION

Sale Closing From: Tuesday, May 21st at 10:00 AM MST **Inspection:** Monday, May 20th from 8:00 AM to 4:00 PM MST

NICHOLS PRECISION – FULL FACILITY CLOSURE



OKUMA GENOS L300-MYW CNC TURNING CENTER

Full Facility Closure Including: As Late As 2014 – Tsugami B0-325-II & SS-26 Swiss-Type Turning, Okuma Spaceturn LB3000EX-II, Genos L300-MYW, Hardinge & Daewoo Live Tool Turning Centers, Doosan, Fadal & Matsuura VMC's, Toolroom, Air Compressors, Mitutoyo CMM, Inspection, Forklift, Bar Stock & Material, Tooling & Factory Support

ONLINE ONLY AUCTION

NICHOLS PRECISION

– FULL FACILITY CLOSURE INCLUDING: AS LATE AS 2014 – TSUGAMI B0-325-II & SS-26 SWISS-TYPE TURNING, OKUMA SPACETURN LB3000EX-II, GENOS L300-MYW, HARDINGE & DAEWOO LIVE TOOL TURNING CENTERS, DOOSAN, FADAL & MATSUURA VMC'S, TOOLROOM, AIR COMPRESSORS, MITUTOYO CMM, INSPECTION, FORKLIFT, BAR STOCK & MATERIAL, TOOLING & FACTORY SUPPORT

TERMS OF SALE

An 18% buyer's premium will be charged on all assets. The buyer's premium will be reduced to 16% for payments made by means of cashier's check or wire transfer within 48 hours of sale close. If paying by company check, a paid in full invoice will be issued upon the check clearing. Credit card payments are limited to a maximum of \$2,000. All items are sold "As is, Where is" without any warranty, express or implied.

REMOVAL

All purchased items must be removed no later than Friday, June 7. Removal hours are 8:00 AM to 4:00 PM MST, Monday through Friday. Extended hours and weekends may be accommodated with prior appointment.

FOR FURTHER INFORMATION

For further information contact Jennifer Reiner at +1-847-545-6374 or jennifer@perfectionindustrial.com

View our current auction schedule at www.perfectionindustrial.com

Sale Closing From: Tuesday, May 21st at 10:00 AM MST

Sale Location: 1257 W Geneva Drive, Tempe, Arizona 85282

Inspection: Monday, May 20th from 8:00 AM – 4:00 PM MST



PERFECTION Industrial Sales

Perfection Industrial Sales

ph +1-847-545-6374 • fax +1-847-427-8884

www.perfectionindustrial.com

Online Bidding at www.perfectionindustrial.com

In Conjunction With:



UNITED

ASSET SALES

ROY GAMITYAN, AUCTIONEER

OFFICE 818.264.4232 | ROY@UNITEDASSETSALES.COM